



PRESS RELEASE - PARIS - 27 OCTOBER 2020

Surprisingly mature galaxies in the early Universe

When the Universe was only a tenth of its current age its galaxies experienced a growth spurt. It was this period that the scientists in the ALPINE project¹ focused on when they used ESO's ALMA² telescope to carry out the first ever large survey of distant galaxies. To their surprise, these galaxies observed in the early stages of their life were far more mature than expected. Their work is the subject of a series of articles published on 27 October 2020 in the journal *Astronomy & Astrophysics*, signed among others by members of the CNRS and Aix-Marseille Université³.

Galaxies began to form very early in the history of the Universe. To study their infancy, it is therefore necessary to go back to the dawn of time, by observing very distant galaxies. The ALPINE project focused on a period between 1 and 1.5 billion years after the Big Bang, when the first galaxies experienced a phase of rapid growth. Although such distant galaxies have already been observed, this is the first time that so many of them have been studied systematically. Images of 118 massive⁴ galaxies, obtained with the Hubble (visible light) and Spitzer (near infrared) space telescopes, as well as spectra acquired using the ground-based VLT and Keck telescopes, were supplemented by 70 hours of observation with ALMA at submillimetre wavelengths (between the infrared and radio waves).

ALMA can quantify dust, a sign of maturity in galaxies, and cold gas, which provides information about their rate of growth and the number of stars they can form, as well as the motion of this gas, thus revealing the dynamics of galaxies. And this turned up some surprising data. For a start, the observed galaxies proved to be very rich not only in cold gas, which fuels star formation, but also in dust, which is thought to be a by-product of stars at the end of their lives. So despite their young age, these galaxies had apparently seen the formation and death of a first generation of stars! The galaxies surveyed also exhibit an astonishing diversity of shapes: some are disordered, others already have a rotating disc that may end up as a spiral structure like the Milky Way, while yet others have been spotted in the process of merging. Another surprising observation is that certain galaxies appear to be ejecting gas, forming mysterious haloes around them. The survey thus raises a number of new questions about the early evolution of galaxies.

Notes

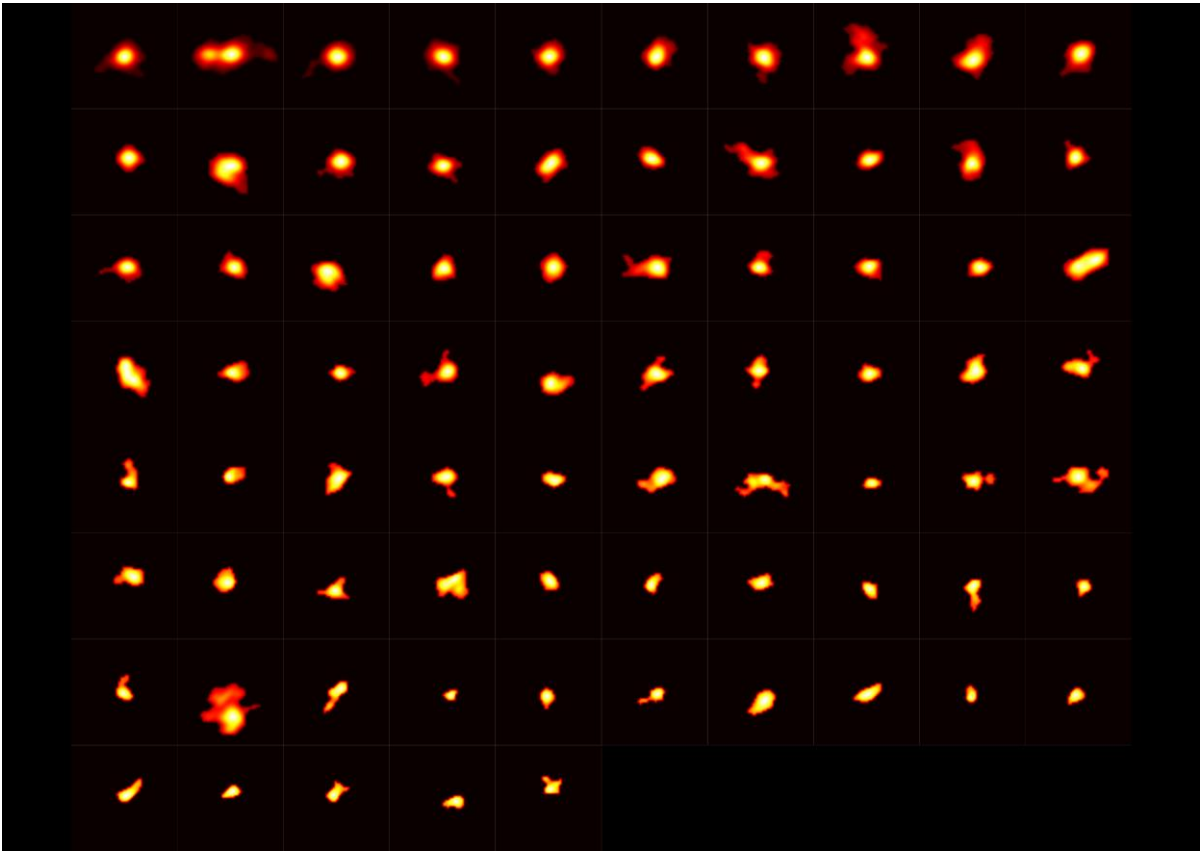
¹ Acronym for *the ALMA Large Program to INvestigate C+ at Early times*

² ALMA (*Atacama Large Millimeter/submillimeter Array*) is a telescope designed for the study of radiation from the coldest objects in the Universe, and consists of 66 antennas located in the Atacama desert in the Chilean Andes.

³ from the Laboratoire d'Astrophysique de Marseille (CNRS/Aix-Marseille Université/CNES) and the Institut de Recherche en Astrophysique et Planétologie (CNRS/Université Toulouse III – Paul Sabatier/CNES).

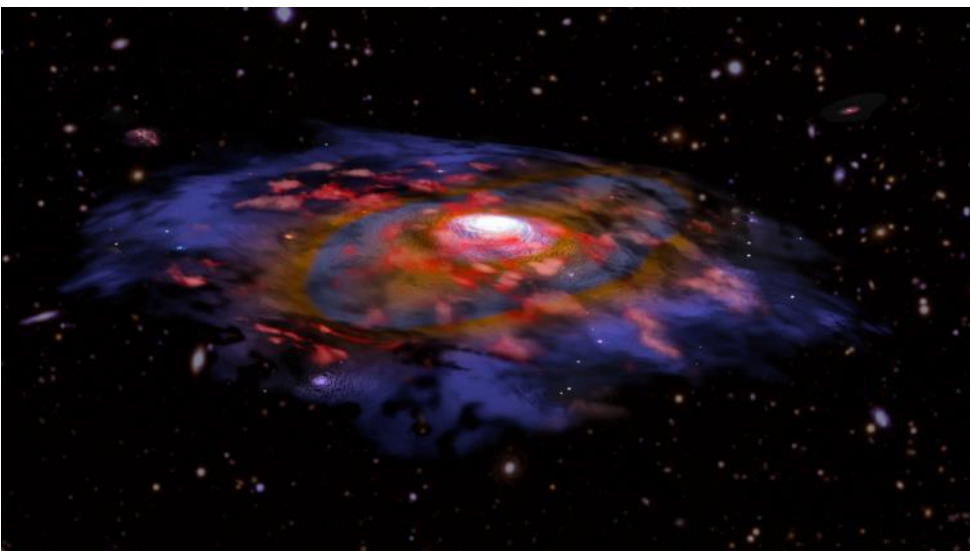
⁴ They have already reached a mass similar to that of the Milky Way today.





Mosaic showing some of the galaxies observed by ALMA. The bright yellow regions are those where the most stars are forming (the ionised carbon (C+) line makes it possible to see the formation of stars obscured by dust). The second image from the left in the top row shows a triple merger.

© Michele Ginolfi / collaboration Alpine



Artist's illustration of a dusty, rotating distant galaxy, in the early universe. In this image, the red color represents gas, and blue/brown represents dust as seen in radio waves with ALMA. Many other galaxies are visible in the background, based on optical data from VLT and Subaru. Animated version: vimeo.com/467391159/ef7ec0f163.

© B. Saxton NRAO/AUI/NSF, ESO, NASA/STScI; NAOJ/Subaru



Bibliography

The results are published as a series of 8 articles in *Astronomy & Astrophysics* on 27 October 2020. Papers are dedicated to the memory of Olivier Le Fèvre, Principal Investigator of ALPINE, who worked at Laboratoire d'Astrophysique de Marseille.

- Olivier Le Fèvre et al. - The ALPINE-ALMA [CII] survey. Survey strategy, observations, and sample properties of 118 star-forming galaxies at $4 < z < 6$ <https://arxiv.org/abs/1910.09517>
- Matthieu Béthermin et al. - The ALPINE-ALMA [CII] survey. Data processing, catalogs, and statistical source properties <https://arxiv.org/abs/2002.00962>
- Daniel Schaerer et al. - The ALPINE-ALMA [Cii] survey. Little to no evolution in the [C ii]–SFR relation over the last 13 Gyr <https://arxiv.org/abs/2004.10760>
- Yoshinobu Fudamoto et al. - The ALPINE-ALMA [CII] Survey: Dust attenuation properties and obscured star-formation at $z \sim 4.4\text{--}5.8$ <https://arxiv.org/abs/2004.10760>
- Miroslava Dessauges-Zavadsky et al. - The ALPINE-ALMA [CII] survey. Molecular gas budget in the early Universe as traced by [CII] <https://arxiv.org/abs/2004.10771>
- Paolo Cassata et al. - The ALPINE-ALMA [CII] survey. Small Ly α -[CII] velocity offsets in main-sequence galaxies at $4.4 < z < 6$ <https://arxiv.org/abs/2002.00967>
- Michele Ginolfi et al. - The ALPINE-ALMA [CII] Survey: CGM pollution and gas mixing by tidal stripping in a merging system at $z \sim 4.57$ <https://arxiv.org/abs/2004.13737>
- Carlotta Gruppioni et al. - The ALPINE-ALMA [CII] Survey: nature, luminosity function, and star formation history of continuum non-target galaxies up to $z \sim 6$ <https://arxiv.org/abs/2006.04974>

Contacts

Aix-Marseille Université Astronome | Matthieu Béthermin | matthieu.bethermin@lam.fr
CNRS / Université de Genève Researcher | Daniel Schaerer | daniel.schaerer@unige.ch
Aix-Marseille Université Astronome | Guilaine Lagache | guilaine.lagache@lam.fr
CNRS Press Officer | Véronique Etienne | T +33 1 44 96 51 37 | veronique.etienne@cnrs.fr

